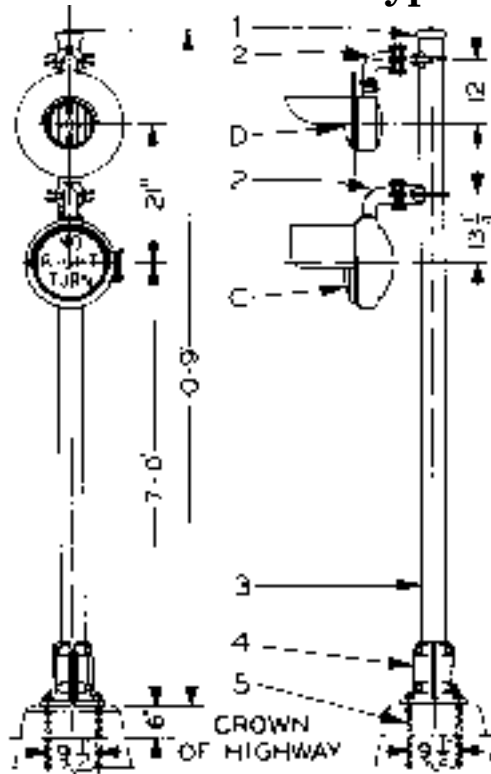
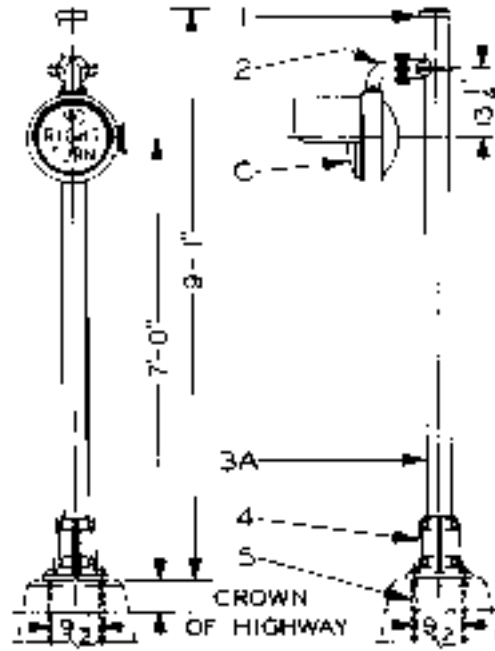


## “No Turn” Signals Type A-457 and Type A-534



Reference A



Reference B

**All Signals Include Junction Box Base, 4" Dia. Mast and Pinnacle  
also Available with 5" Dia. Mast or with 12" Dia. Amber Lights.**

Ref.	Description	Part Number
A	“NO RIGHT TURN” signal with 8" amber light	A-457-R
A1	“NO LEFT TURN” signal with 8" amber light	A-457-L
B	“NO RIGHT TURN” signal	A-534-R
B1	“NO LEFT TURN” signal	A-534-L

**Also Available Lettered Stop, Stop Here, No Turn or Two Trains**

C	Lettered 12" Signal Unit. Specify Lettering	939-1-( )
D	8" Amber Light Unit	970-201-Y
D1	12" Amber Light Unit	985-201-Y

### REPLACEMENT PARTS

1	Pinnacle for 4" Mast	110-A-6
2	6" Lamp Mounting Arm with "U" Bolt and Hardware	932-52-4
2A	12" Lamp Mounting Arm with "U" Bolt and Hardware	932-53-4
3	Mast, 4" I.D. x 10'-8" High for A-457 Signal	714-128-4
3A	Mast 4" I.D. x 9'-0" High for A-534 signal	714-22-3
4	Junction Box Base for 4" Mast	2146-A-11
5	Anchor Bolt, 1" x 36" Long with Hardware (Optional)	11079