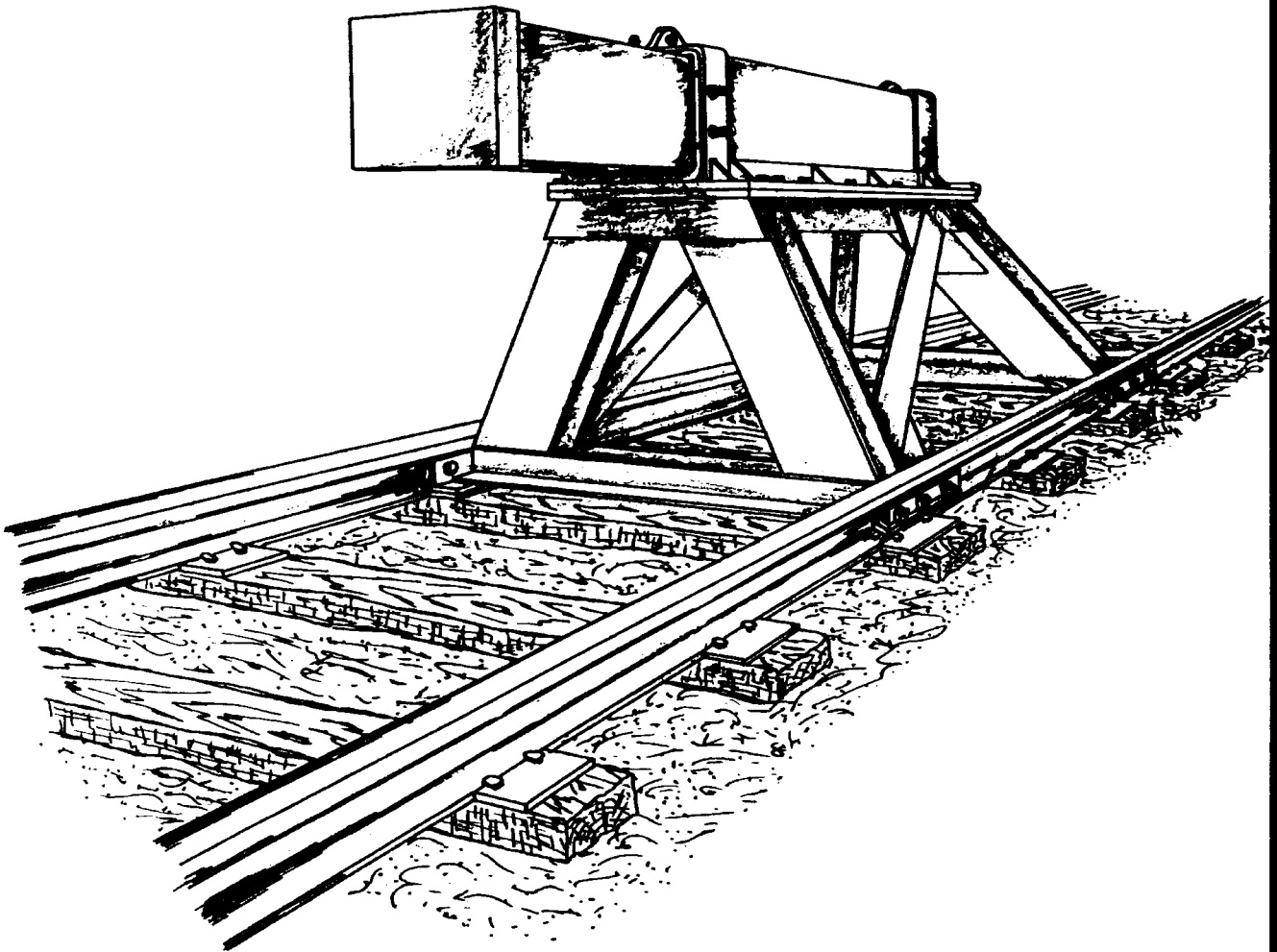


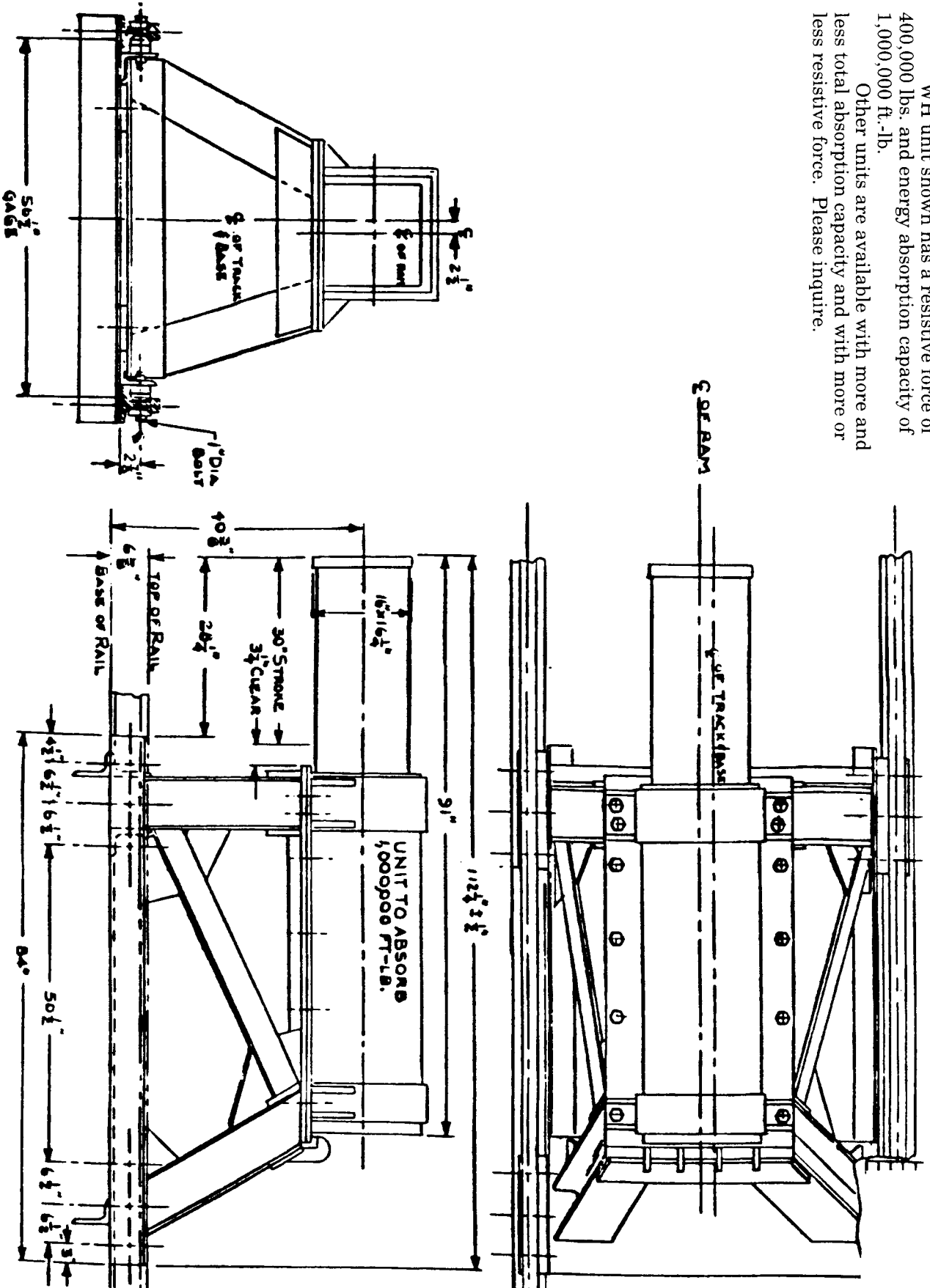
Western-Cullen-Hayes

Model WH Hydraulic Bumping Post



WH unit shown has a resistive force of 400,000 lbs. and energy absorption capacity of 1,000,000 ft.-lb.

Other units are available with more and less total absorption capacity and with more or less resistive force. Please inquire.



WESTERN-CULLEN-HAYES, INC.

2700 W. 36TH PLACE
(773) 254-9600

CHICAGO, IL. 60632
FAX (773) 254-1110



WESTERN-CULLEN-HAYES, INC.

120 N. 3rd Street, P.O. Box 756, Richmond, Indiana 47374
(765) 962-0526

FAX (765) 966-5374