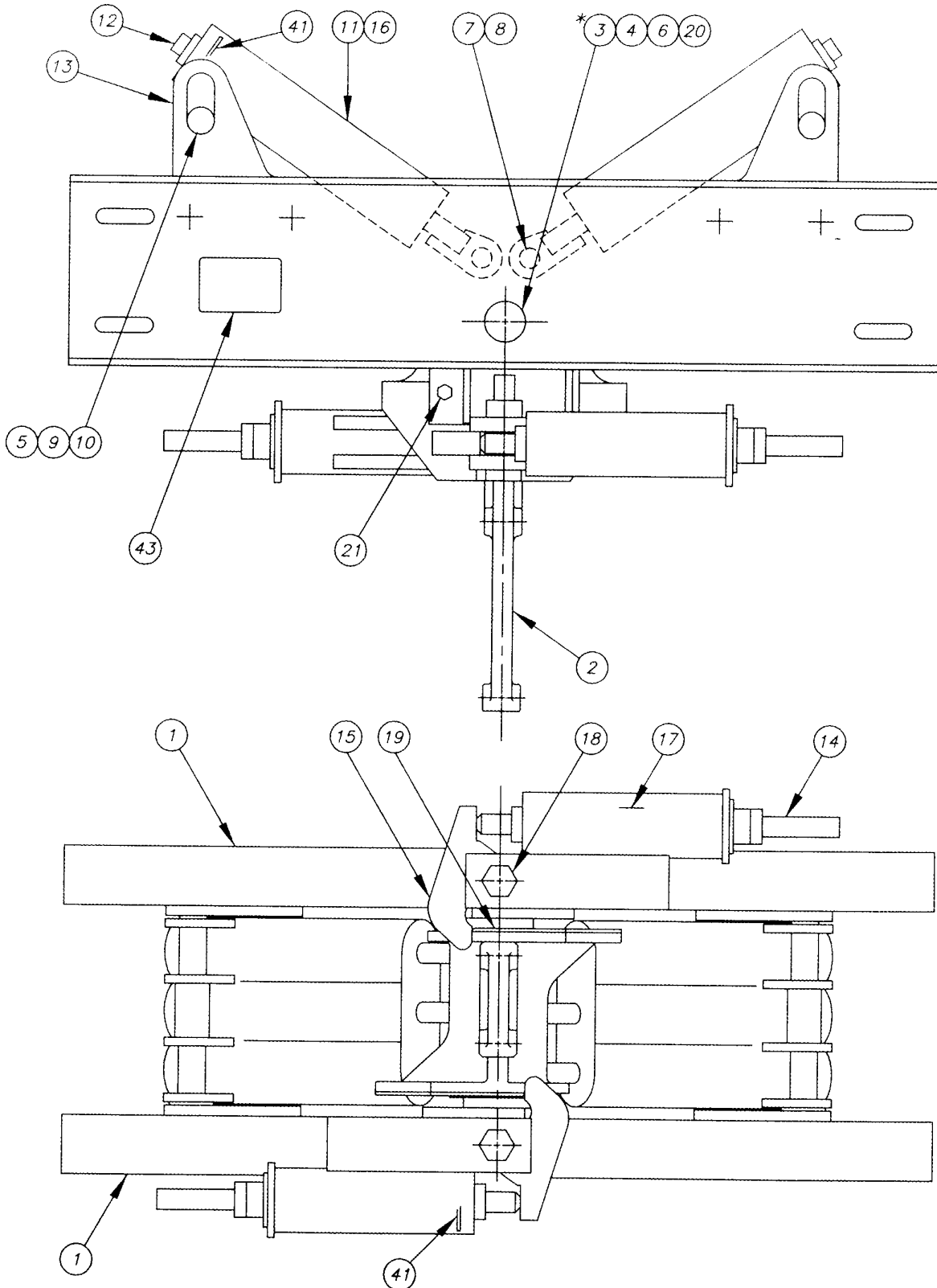


Bi-Directional Gate-Gard Adapter



WESTERN-CULLEN-HAYES, INC.

2700 W. 36TH PLACE
(773) 254-9600

CHICAGO, IL. 60632
FAX (773) 254-1110

Bi-Directional Gate-Gard Adapter Parts

| Reference | Quantity | Description | Part No. |
|-----------|----------|---------------------------|--------------|
| 1 | 2 | Cross Channel | C-1034-2 |
| 2 | 1 | Gate Arm Adapter | C-1037-1 |
| 3 | 2 | Hinge Pin Bushing* | A-1289 |
| 4 | 1 | Thrust Washer | 81-1029 |
| 5 | 2 | Thrust Washer | A-1290 |
| 6 | 1 | Hinge Pin | A-1298-1 |
| 7 | 2 | Spring Rod Connecting Pin | A-1299-1 |
| 8 | 4 | Spring Rod Spacer | A-1300-1 |
| 9 | 2 | Return Spring Housing Pin | A-1301-1 |
| 10 | 2 | Spring Pin Spacer | A-1302-1 |
| 11 | 2 | Return Spring Housing | B-1069-2 |
| 12 | 6 | Spring Connecting Rod | A-1306-2 |
| 13 | 4 | Spring Anchor Bracket | A-1309-1 |
| 14 | 2 | Latch Spring Rod | A-1313-1 |
| 15 | 2 | Latch Hook | B-1071-1 |
| 16 | 6 | Return Spring | A-1148-6 |
| 17 | 2 | Latch Spring | A-1148-3 |
| 18 | 2 | Latch Hook Pivot Pin | A-1315 |
| 19 | 2 | Wear Plate | B-1074 |
| 20 | 1 | Lower Hinge Bracket | A-1288-1 |
| 21 | 2 | Brass Shear Pin | 38-0027-13-1 |
| 41 | 36 | 1 15/16 OD Washer | A-1435 |
| 43 | 1 | Nameplate | A-1430 |
| | | *Welded Adapter Only | |

WESTERN-CULLEN-HAYES, INC.

2700 W. 36TH PLACE CHICAGO, IL. 60632
(773) 254-9600 FAX (773) 254-1110