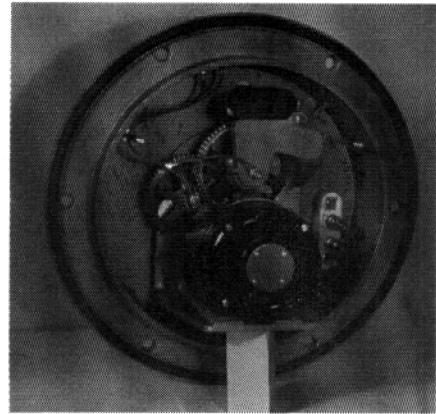
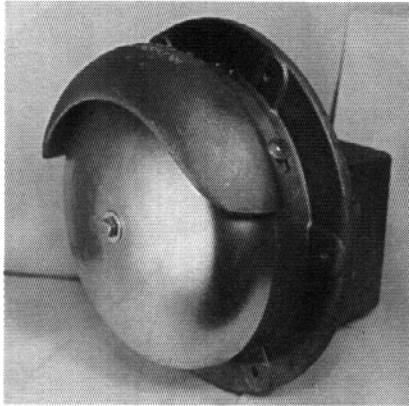


Type 555 Motor Driven Bell For Bulkhead Mounting or Top of Mast Mounting



- **112 Strokes Per Minute**
- **Twelve Inch Bell Steel Gong**

- **Cast Aluminum Housing**
- **With Exterior Lubrication Points**

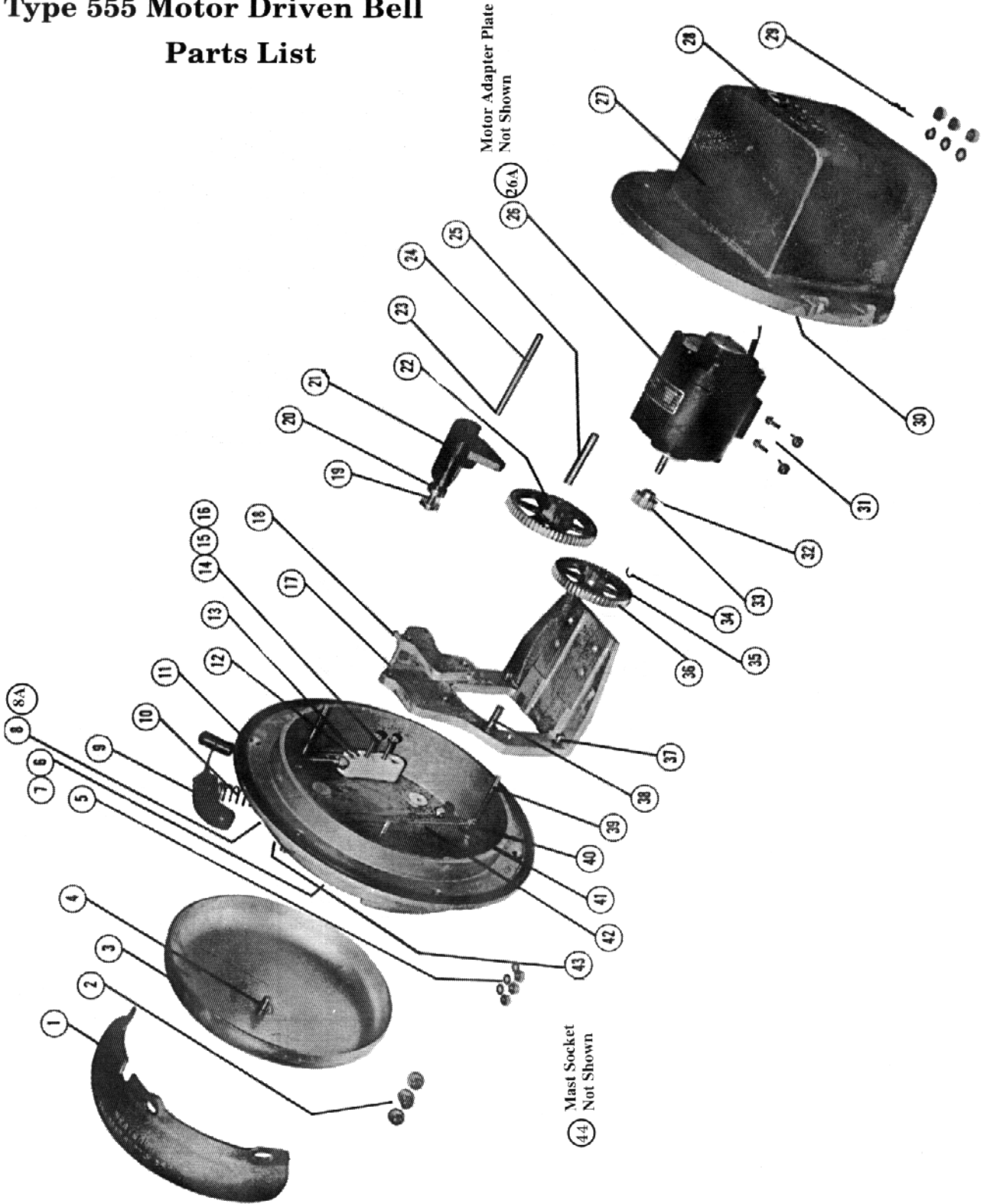
The Type 555 motor driven bell has an operating mechanism which consists of a motor, two gears and a bell hammer. Each hammer blow is distinct – so timed that the sound waves of the blow are not broken up by those of subsequent blows.

Operation. A cam, which is mounted on one of the gear wheels, engages and raises a weight to a certain point and then allows it to drop; this causes the bell hammer, which is connected to the operating weight by a shaft, to strike the gong, giving it a clear and penetrating sound.

Bulkhead Mount		Top of Mast Mount 4" - 5"	
Part Number	Voltage	Part Number	Voltage
0555-ACN-24-C	24 VDC	0555-C-12-11560	115 VAC
0555-ACN-37.5-C	37.5 VDC		
0555-ACN-74-C	74 VDC		
0555-ACN	115 VAC		

NOTE: 0555-ACN supplied without bell mechanism cover.

Type 555 Motor Driven Bell Parts List



WESTERN-CULLEN-HAYES, INC.

2700 W. 36TH PLACE
(773) 254-9600

CHICAGO, IL. 60632
FAX (773) 254-1110

Type 555 Motor Driven Bell Parts List

Reference	Description	Part Number
1	Rainshield	1208-CA
2	5/16" - 18 x 5/8" Hex Bolt	BB-12-GG-3-0062
3	Gong	1211
4	1/2" - 13 x 7/8" Hex Bolt	BB-12-PP-3-0087
5 & 29	1/4" - 20 Hex Nut	JJ-12-EE-2
6	Spring Rocker	1508-6
7	#10 - 32 x 1-1/2" Round Head Screw	AA-10-DD-3-015
8	Bulkhead Mount Case	1506-EM
8A	Mast Mount Case	1506-CA
9	Hammer & Hammer Support	1508-55
10	Hammer Spring	1508-7
11	Gasket - 3/8" Dia. Neoprene Cord	MC-126-00002
12 & 37	1/4" - 20 x 7/8" Filister Screw	AA-16-EE-3-0087
13	Terminal Block	1056-18E
14	Binding Nut	10706
15	Clamp Nut	10707
16	Washer	10708
17	Gear Frame	1411-3-CA
18	10 - 32 x 1/2" Set Screw	DD-29-DD-3-005
19	Operating Weight Stud	1508-4
20	5/16" Plain Washer	PP-00-AK-3
21	Operating Weight	1508-45

Type 555-ACN Parts List - Continued

Ref.	Description	Part Number
22	Drive Gear	1410-1
23	1/6" x 1/2" Cotter Pin	VV-00-AZ-3-005
24	Operating Weight Pin	1508-46
25	Drive Gear Shaft	1410-22
26	Motor Sub-Assy (Specify 24, 37.5, 74VDC, 115VAC)	
26A	Motor Adaptor Plate (Not Shown)	1411-12
27	Cover	1507-EM
28	1/2" Chase Nipple, Straight	RM-122-00001
30	Felt-Packing	1217-2
31	10/32" x 1-1/2" Round Head Screw	AA-10-DD-3-015
32	3/32" Dia. x 5/8" Roll Pin	WW-00-AY-3-0062
33	Pinion	1410-15-B
34	Snap Ring	254229
35	3/8" I.D. x 1-1/16" O.D. x 1/32" Washer	1410-32
36	Intermediate Gear & Pinion	1410-16
38	Intermediate Gear Stud	1508-141
39	Stud	1508-35
40	L-Fitting	15002-1
41	Hose Fitting	1508-47
42	Vinyl Tubing (Length as Req'd.)	3814-5
43	Oil Hole Cover	1508-44
44	Mast Socket for 4" or 5" Mast (Not Shown)	1206-20

WESTERN-CULLEN-HAYES, INC.

2700 W. 36TH PLACE CHICAGO, IL. 60632
(773) 254-9600 FAX (773) 254-1110