

Pedestal Mounted Terminal Housings

Western-Cullen-Hayes pedestal mounted terminal housings are available in a variety of sizes.

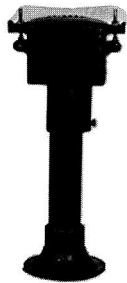
Terminal housings used for cable connections, arrestors, resistors, transformers, etc.

Wood terminal boards are available for equipment mounting.

Available in a variety of configurations of terminal and cable entrances.

Housing descriptions, dimensions and some typical layouts found on the following pages.

All terminal housings made of cast iron except type 1236 which is cast aluminum.



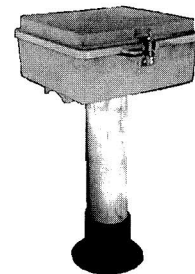
Type 1155



Type 1182



Type 1233

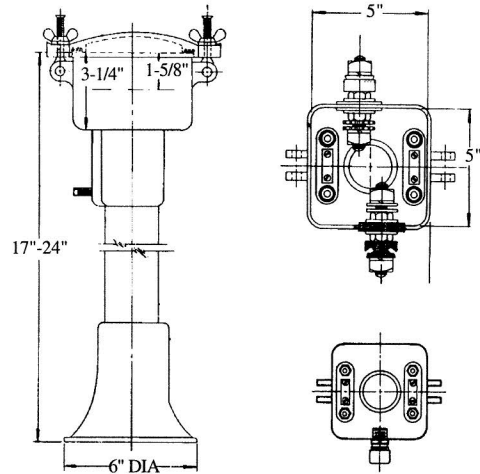


Type 1236

Ordering Information

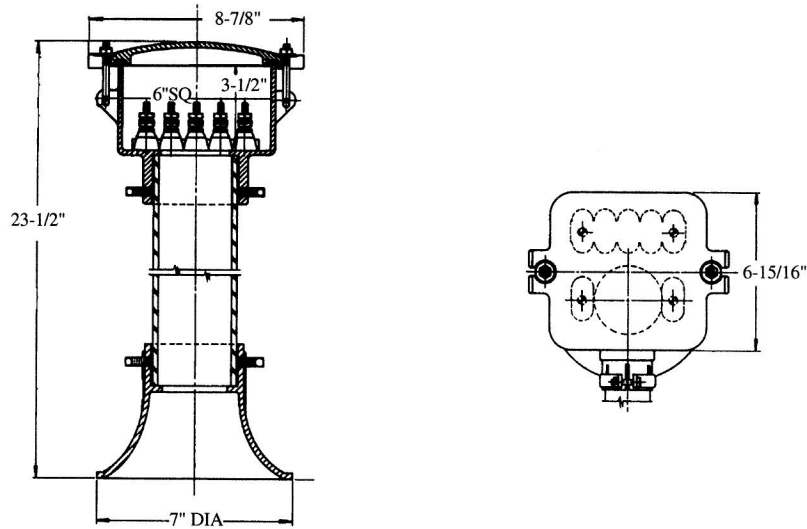
1. Select housing.
2. Specify terminal requirements. Terminals described on page 12-1.
3. Specify cable entrances required via illustrations on page 10.
4. Specify connectors and conduit. See page 8.
5. Specify ventilators and outlets.

Type 1155 Terminal Housing and Bootleg



Type 1155 terminal housing is made of cast iron and can hold as many as four terminals which may be installed in the head casting. Different types of connectors and bushings can be used. Standard height, 17" overall; riser, 2" I.D.; head 5" sq. by 3-1/4" deep. A riser is also available to provide 24" overall height, if specified.

Type 1182 Terminal Housing



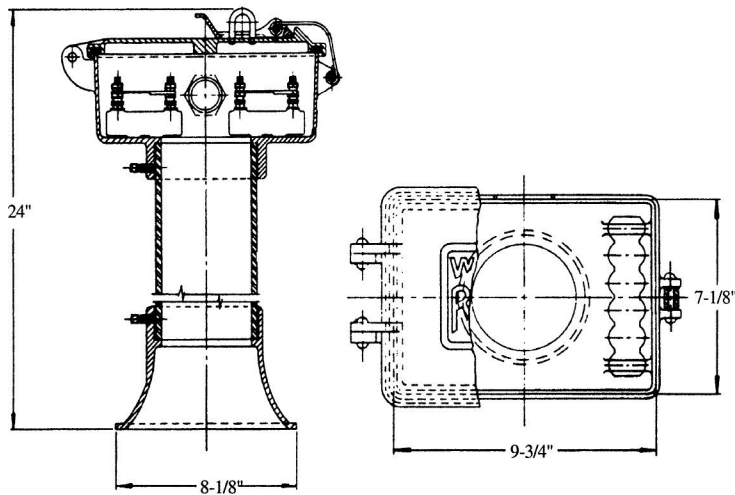
Type 1182 terminal housing is made of cast iron and has the riser offset leaving mounting space for more terminals in the box.

WESTERN-CULLEN-HAYES, INC.

2700 W. 36TH PLACE
(773) 254-9600

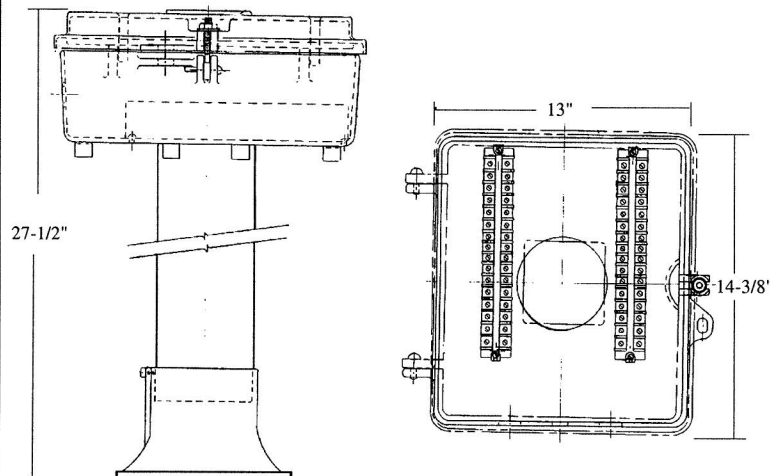
CHICAGO, IL. 60632
FAX (773) 254-1110

Type 1233 Terminal Housing



Type 1233 terminal housing consists of a terminal box 9-3/8" x 6-3/4" x 3-5/8" deep in which as many as 24 binding posts can be provided. Cast iron construction.

Type 1236 Terminal Housing



Cast aluminum construction. One of the largest terminal housings available. Inside dimensions measure 13-1/4" x 11-3/4" and is 4" deep. 4" I.D. riser provided.