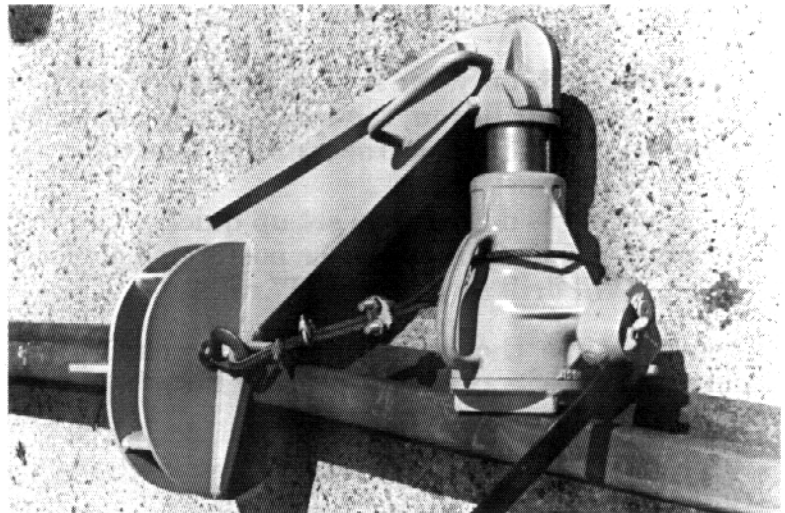


Jack-Type Rail Benders

Series 150 – 50 Ton Bender

Series 130 – 25 and 35 Ton Bender

- **Make stock rail and guard rail bends conveniently.**
- **Fifty ton bender will reliably generate 100,000 pounds of bending force.**
- **Especially well-suited to bending newer high-Brinell rail.**
- **Safer -- safety cable prohibits jack from slipping out of place.**
- **Rugged, but lighter weight than similar benders of same capacity**
- **Built-in-scale assures accurate duplication of bends.**



View of Series 150 Rail Bender

Bender Assemblies

Model	Lever Bar Inches	Rail Capacity Pounds	Maximum Bend Inches	Jack & Cable Wt. Pounds	Frame Weight Pounds	Part Number
50 Ton (T Rail)	1-1/8 x 56	136	6	100	250	J-5694
50 Ton (Undercut)	1-1/8 x 56	136	6	100	250	J-5696
35 Ton	1 x 38	132	5-1/2	60	130	J-767
25 Ton	1 x 38	110	5-1/2	50	130	J-657

Jack - Type Rail Benders

The Western-Cullen-Hayes Jack Type Bender consists of a steel frame, (one end of which fits over the ball of the rail, the other end seating on the top of the jack), a safety cable, a jack, and a lever bar. The base of the jack is seated against the side of the rail. With the frame firmly holding a section of rail, the force applied to the jack by power on the lever bar bends the rail.

The curved base of the jack compensates for the required angle when bending rail. The base is deeply slotted, with flanges to hold jack on the rail. A specially shaped cap on the top of the jack fits into a cylindrical bearing in the end of the frame, free to move as the rail is bent. The cap is flanged on one side to hold it securely in place during operation. A graduated scale is mounted on the side of the ram to show the actual amount of bend being exerted in the particular section of rail.

The safety cable is used to protect the operator and should be fastened through the jack and connected to the hook before the bending operation is performed.

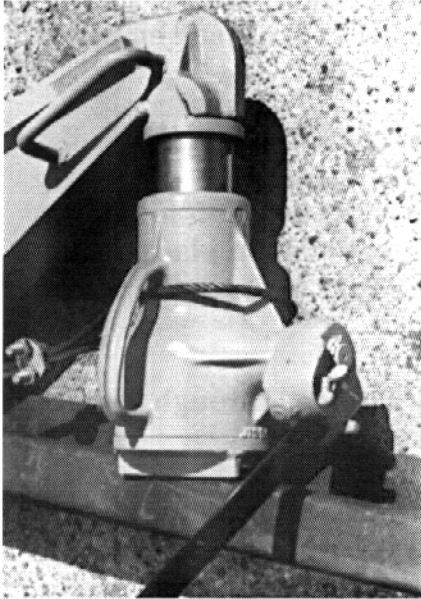
The Western-Cullen-Hayes Rail Bender can be supplied with 25, 35 or 50 ton special journal jack. A 25 ton jack is suitable for bending up to 110 lb. rail. The 35 ton jack enables one man to bend any size rail up to 132 lbs. The 50 ton Rail Bender is suitable for bending up to 136. lb. high-strength rail. Bending capacity to 100,000 lbs.

The Model 150 Rail Bender accommodates standard "T" rail. A special Model 151 Rail Bender is designed for use with undercut rail.

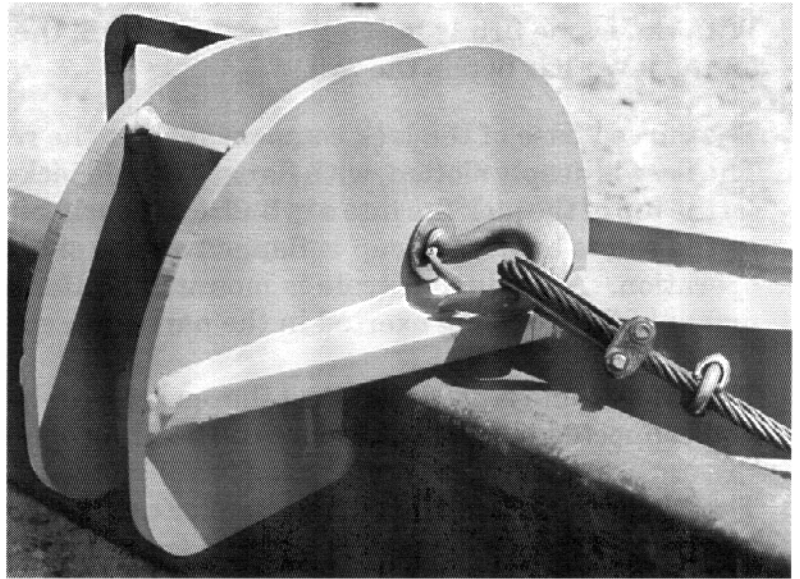
Rail Bender Safety -- Six Rules That Must Be Followed

1. Do not use bender without having safety cable properly in place.
2. Do not raise the jack standard beyond the stop line. (second line).
3. Do not unscrew the jack base to increase lift.
4. Do not attempt to bend rail that requires a force greater than rated capacity of jack.
5. Do not use a Lever bar longer than that furnished with the jack.
6. Do not use a rail bender jack for routine jacking projects.

Jack - Type Rail Benders



Jack and Cable

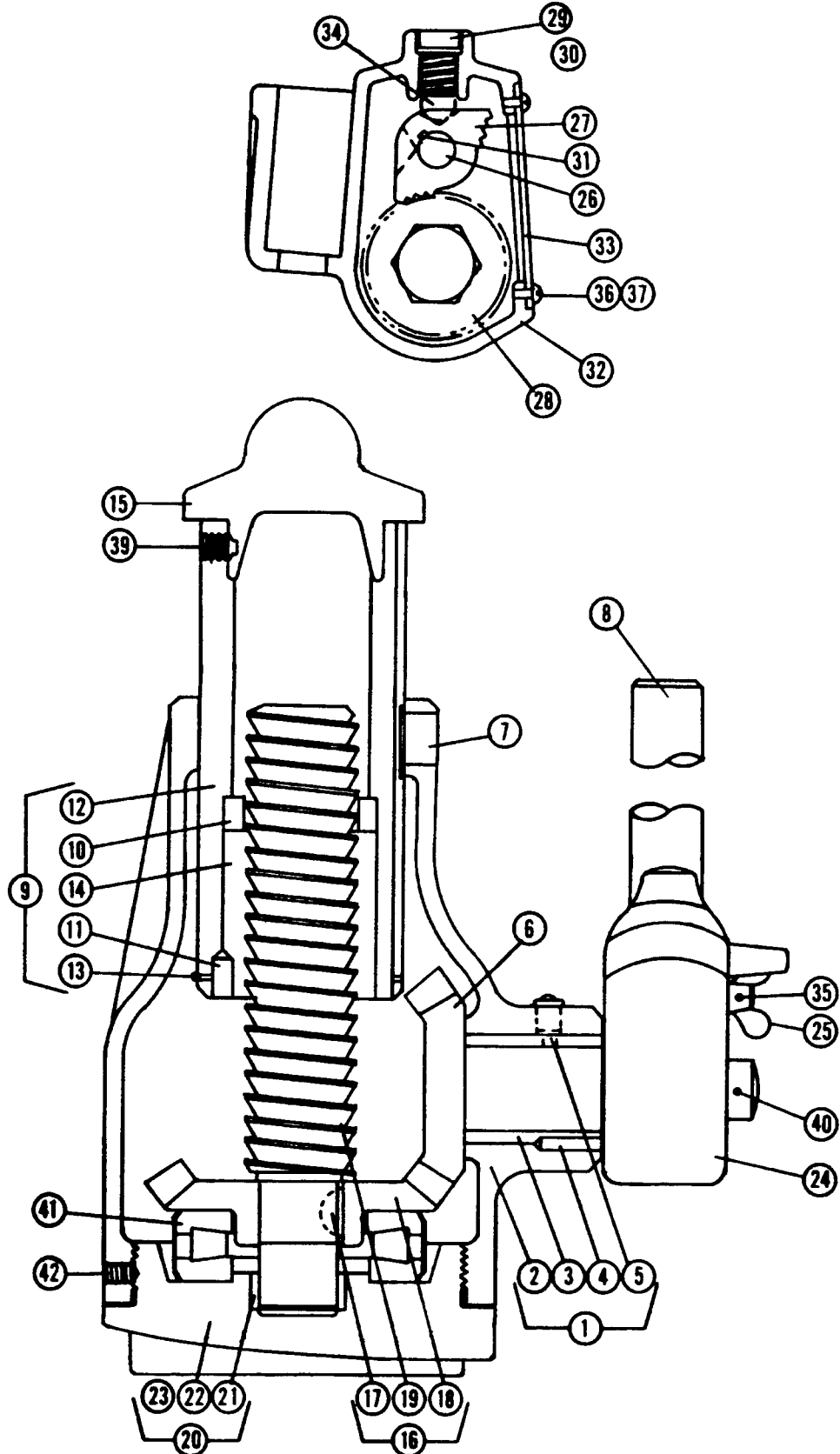


Frame

Bender Sub-Assemblies

Model	Jack & Cable	Frame	Cable Assembly
50 Ton (T Rail)	J-5565	J-5567	J-3271
50 Ton (Undercut)	J-5699	J-5567	J-3271
35 Ton	J-5501	J-768-HT	J-3271
25 Ton	J-5483	J-768-HT	J-3271

Rail Bender Jack



WESTERN-CULLEN-HAYES, INC.

2700 W. 36TH PLACE CHICAGO, ILL. 60632
 (773) 254-9600 FAX (773) 254-1110



WESTERN-CULLEN-HAYES, INC.

120 N. 3rd. Street, Richmond, Indiana 47374
 (765) 962-0526 FAX (765) 966-5374

Rail Bender Repair Parts

Ref.	Description	25 Ton PN: J-5483	35 Ton PN: J-5501	50 Ton PN: J-5565
1	Shell Assembly	J-3501	J-4914	J-1403
2	Shell	J-3500	J-50-A	J-1399
3	Bushing, Stem Gear	J-72	J-63	J-90
4	Pin, Bushing	J-2346	J-2346	251741
5	Oiler	250389	250389	250389
6	Stem Gear	J-1665	J-4879	J-4881
7	Key, Standard	J-2354	J-2354	J-4643
8	Lever Bar	J-5300	J-5300	J-5302
9	Standard Assembly	J-5470	J-5487	J-5564
10	Nut Ring, Main Screw	J-68	J-55	NA
11	Nut Pin, Main Screw	J-215	J-215	J-215
12	Standard	J-5369	J-5486	J-5562
14	Main Screw Nut	J-5375	J-5380	J-5381
15	Cap	J-5462	J-769	J-5557
16	Main Screw Assembly	J-5383	J-5441	J-5483
17	Key Main Screw Gear	J-845	J-845	117977
18	Gear	J-1661-1	J-4880	J-4882
19	Main Screw	J-5376	J-5393	J-5396
20	Base Plate Assembly	J-5480	J-5490	J-5563
21	Bushing	J-60	J-60	J-4020
22	Base Plate	J-5420	J-5502	J-5560
24	Socket Assembly	J-5592	J-5592	J-253
25	Wing Nut	J-97	J-97	J-149
26	Pawl Pin	J-98	J-98	J-256
27	Pawl	J-100	J-100	J-257
28	Ratchet	J-101	J-101	J-258
29	Screw, Ball Spring	J-102	J-102	J-102
30	Spring, Steel Ball	J-143	J-143	J-259
31	Key	J-144	J-144	J-260
32	Socket Lever	J-5513	J-5513	J-254
33	Socket Cover	J-5591	J-5591	NA
34	Steel Ball	104922	104922	104922
35	Pin, Wing Nut	251740	251740	251741
36	#6 Lockwasher	SS-00-AF-3	SS-00-AF-3	NA
37	6/32 x 1/4 Round Head	AA-10-AA-3-0025	AA-10-AA-3-0025	NA
39	3/8 - 16 x 1/2 Set Screw	DD-12-GG-3-0037	DD-12-GG-3-0037	DD-28-JJ-3-005
40	Cotter Pin Ratchet	VV-00-BB-3	VV-00-BB-3	VV-00-AJ-3-0125
41	Bearing	253477	253477	253727
42	Base Plate Screw	DD-49-JJ-3-005	DD-40-JJ-3-005	DD-47-JJ-3-0063