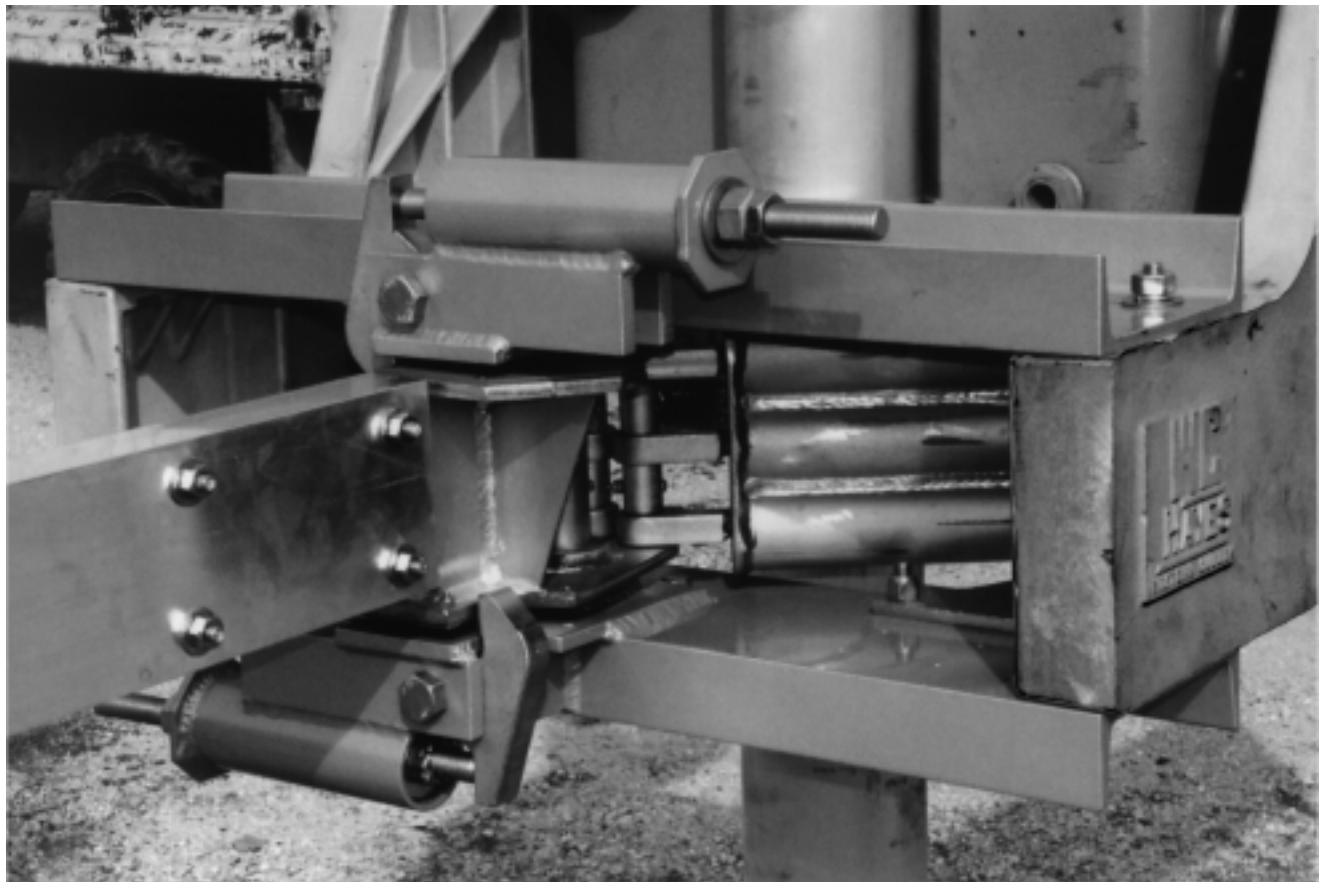


Bi-directional Gate Gard

Reduce the cost of crossing gate arm maintenance, and ensure that your gate mechanisms operate properly. Western-Cullen-Hayes announces the latest in our line of money saving products, the Bi-directional or two-way "Gate Gard." The new Bi-directional "Gate Gard" incorporates the same, proven, latch hook and return spring package design features as our single direction "Gate Gard." Now we have the capability of protecting gate arms that are impacted from the back as well as the front. This feature is particularly important when a motor vehicle tries to go around lowered gates and strikes the arm from behind. In ordinary spring loaded adapters this action would break the arm and in some cases bend or even break the adapter. Please contact Western-Cullen-Hayes for details on the new Bi-directional "Gate Gard."

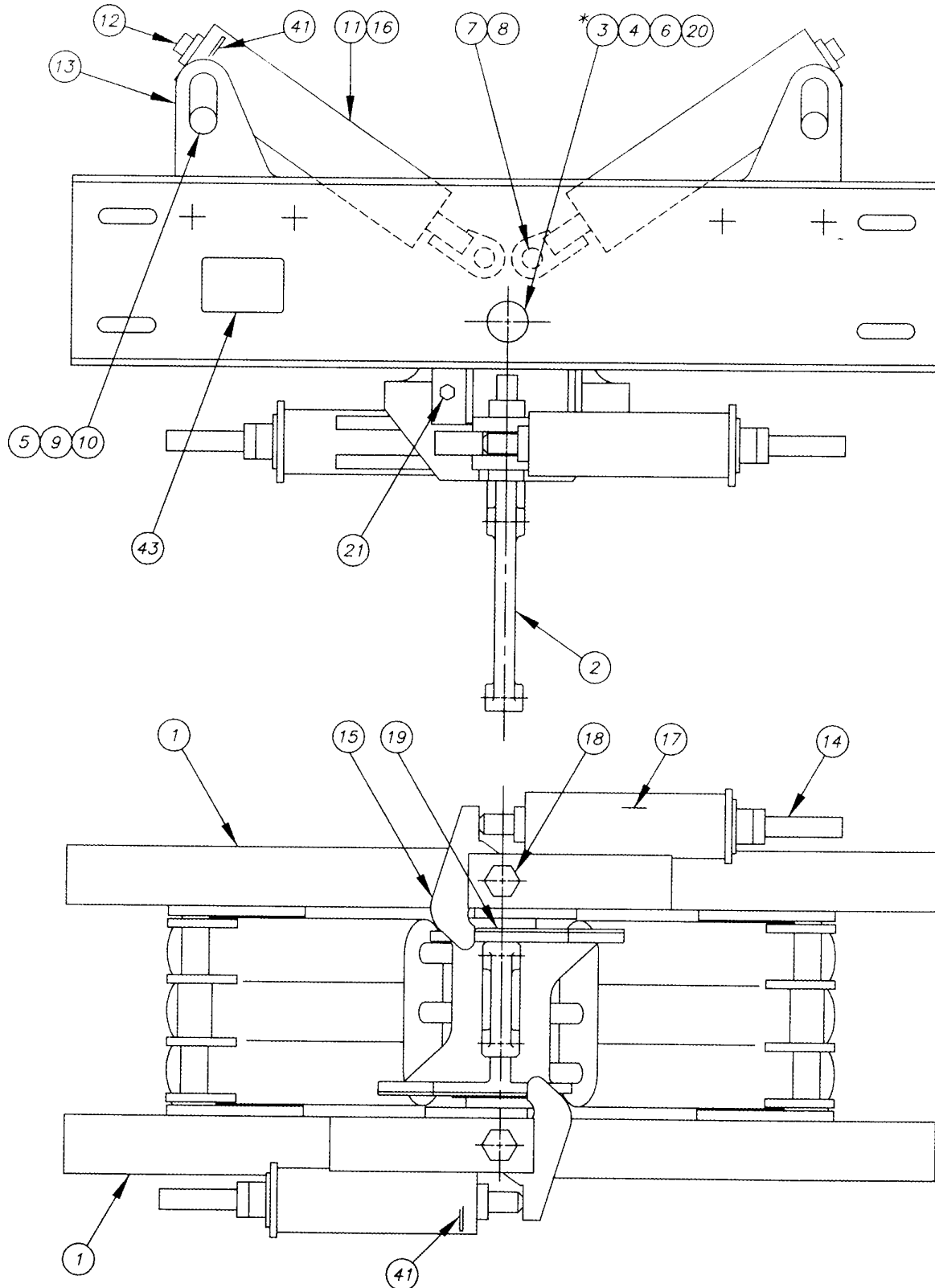


Part Number D-1074

WESTERN-CULLEN-HAYES, INC.

2700 W. 36TH PLACE CHICAGO, IL. 60632
(773) 254-9600 FAX (773) 254-1110

Bi-Directional Gate-Gard Adapter



WESTERN-CULLEN-HAYES, INC.

2700 W. 36TH PLACE
(773) 254-9600

CHICAGO, IL. 60632
FAX (773) 254-1110

Bi-Directional Gate-Gard Adapter Parts

Reference	Quantity	Description	Part No.
1	2	Cross Channel	C-1034-2
2	1	Gate Arm Adapter	C-1037-1
3	2	Hinge Pin Bushing*	A-1289
4	1	Thrust Washer	81-1029
5	2	Thrust Washer	A-1290
6	1	Hinge Pin	A-1298-1
7	2	Spring Rod Connecting Pin	A-1299-1
8	4	Spring Rod Spacer	A-1300-1
9	2	Return Spring Housing Pin	A-1301-1
10	2	Spring Pin Spacer	A-1302-1
11	2	Return Spring Housing	B-1069-2
12	6	Spring Connecting Rod	A-1306-2
13	4	Spring Anchor Bracket	A-1309-1
14	2	Latch Spring Rod	A-1313-1
15	2	Latch Hook	B-1071-1
16	6	Return Spring	A-1148-6
17	2	Latch Spring	A-1148-3
18	2	Latch Hook Pivot Pin	A-1315
19	2	Wear Plate	B-1074
20	1	Lower Hinge Bracket	A-1288-1
21	2	Brass Shear Pin	38-0027-13-1
41	36	1 15/16 OD Washer	A-1435
43	1	Nameplate	A-1430
		*Welded Adapter Only	

WESTERN-CULLEN-HAYES, INC.

2700 W. 36TH PLACE CHICAGO, IL. 60632
 (773) 254-9600 FAX (773) 254-1110