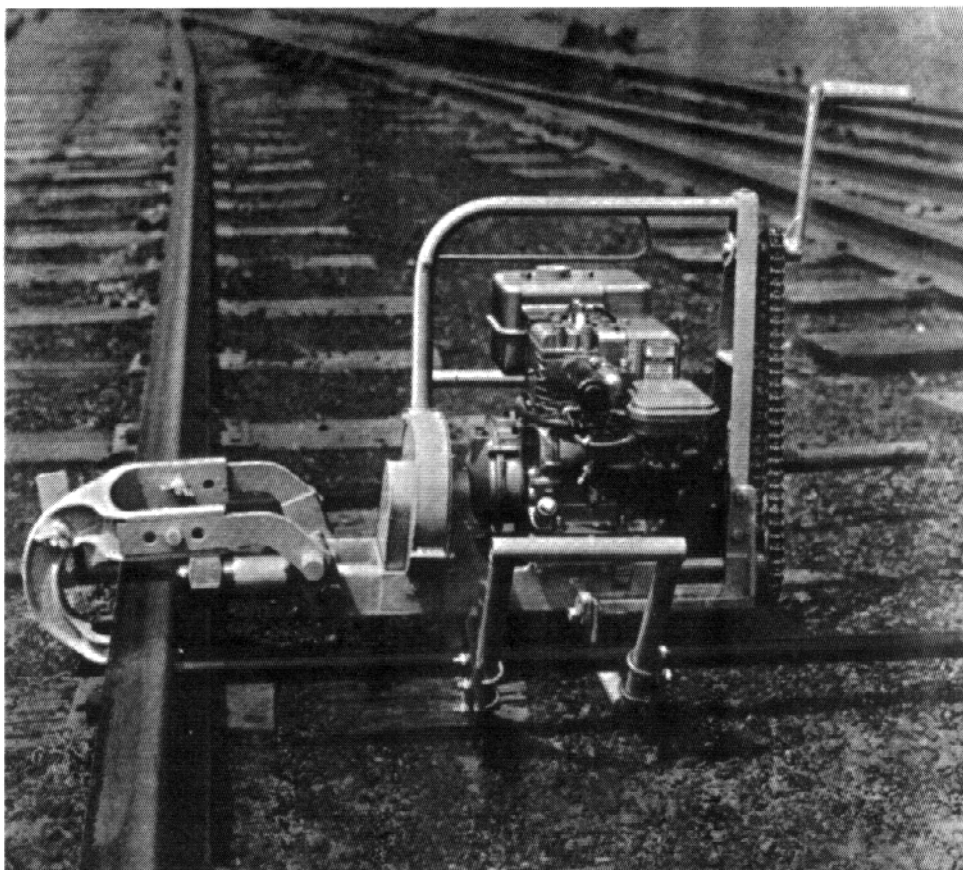


## Model P, Power Track Drill

This highly productive drill is light and dependable. Carefully engineered to meet railroad requirements in:

1. Economy -- low purchase price, low fuel consumption rate (less than one quart for average eight hour shift).
2. Safety -- on approach of trains drill can be removed from rail in 10 seconds.
3. Reliability -- all weather operation, simple adjustments. Hand crank controls feed of bit which results in less bit wear.
4. Portability -- only one man is needed to start, operate and release the drill from the track. Compact unit weighs only 130 lbs. Optional locator rods are telescopic.
5. Versatility -- drill can be set up quickly and located either from the top of the rail or be positioned on the ties and ballast. Will drill any weight "T" rail.

Tested by time, the Model P Power Track Drill is a respected maintenance of way tool. A worthy investment to help you meet today's track maintenance needs



**WESTERN-CULLEN-HAYES, INC.**

2700 W. 36TH PLACE  
6/01 (773) 254-9600

CHICAGO, IL. 60632  
FAX (773) 254-1110



**WESTERN-CULLEN-HAYES, INC.**

120 N. 3rd. Street, Richmond, Indiana 47374  
(765) 962-0526 FAX (765) 966-5374